



GOLF & LAND DESIGN

E-BOOK SPORTS

Contents:

3. **Introduction**

4. Hans-Georg Erhardt

5. Golf & Land Services
Golf & Land Projects

Hotel & resorts

6. Sharm Dreams Resort

10. Bad Tatzmannsdorf - Hotel & Spa
Development

15. Golf & Living Resort Lanzenkirchen

Attractions & entertainment

27. Austrian Garden Show

31. Senza Confini

Sport facilities

35. Magna Racino

39. Oberwaltersdorf

43. Vinea Ritzing Sport & Freizeit

Private gardens

48. Rosa Club House

51. Office Tower Cofresi

57. **Contact Us**

Introduction

About Golf & Land Design

During the last twenty years, **Golf & Land Design** has gained extensive experience in large and small - scale planning as well as landscape architecture projects. Through our design practice we have been able to develop projects in Europe, Africa, America and the Pacific Region. The understanding of the landscape, the history, local context, urban setting and the surrounding ecology allows **Golf & Land Design** to create clear, strong and understandable concepts and an individual approach to each project. It underlines the fact, that each design carries a unique identity of its place.

Professional knowledge, experience, motivation and a symbolic functioning work climate for all concerned, offer the client an optimum solution at the best possible price.

We pride ourselves in our ability to work with a wide range of projects such as:

- *hotel and resorts
- *attractions & entertainment
- *sport facilities
- *community planning
- *private gardens
- * and golf courses (E-Book Golf)

Office Location



Golf & Land Design's main office is located in Steyr, Austria, one of the oldest and most beautiful historic cities in the country with a lot of tradition in industry and craftsmanship. Since March 2006 we have been working in our new, more spacious and totally modernised town office, which is centrally located and easily accessed.

Office Structure

A team of golf designers and landscape architects are working on projects world-wide. Our small structure is however well organized, highly efficient and well trained. To remain a leading design office in the landscaping business, **Golf & Land Design** puts great emphasis on in-house training as well as a permanent process of improving all typical work flows.

Hans-Georg Erhardt



After a short apprenticeship in landscaping and his studies in Landscape Architecture, Hans-Georg Erhardt started a Landscape Architectural practice in Linz in 1982, Austria, as a self employed landscape architect, concentrating on high end site planning and landscape design work of all calibre. He is a member of the Austrian Society of Landscape Architects (ÖGLA).

One of his most interesting professional experiences was teaching and lecturing at two universities. For many years, Hans-Georg Erhardt was in charge of a basic education in landscape architecture at the University of Fine Arts / Kunsthochschule in Linz, Austria, as well as all technical training and education for landscape architects at Munich Technical University.

In 1986 Hans-Georg Erhardt turned to golf course design and has specialised in this field ever since. He is a member of the European Institute of Golf Course Architects (EIGAC) and was one of the founding members of the European Society of Golf Course Architects (former ESGA), which joined with the British Institute (former BIGCA) several years ago thus forming the European Institute.

Golf & Land Services

In order to achieve **the highest quality** of our design **Golf & Land Design** offers the following services for our international partners / co-investors / operating clients:

Master Land Use and Site Planning:

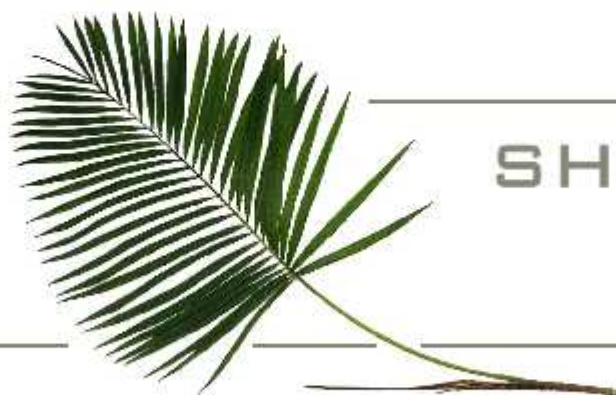
- Site Analysis
- Facilities Audit / Survey
- Land Use Feasibility Studies
- Land Use Programming and Planning
- Cost / Benefit Analysis
- Master Planning

Detailed Site Design :

- Site Design
- Landscape Planting Design
- Hardscape Design
- Site Grading
- Irrigation Plans
- Site Lighting Design
- Wall and Fence Design
- Fountains, Pools and Water Features
- Entry Statement Design
- Cost Estimating
- Theming and Exhibit Design
- Parking Design



Hotels & Resorts



SHARM DREAMS RESORT

SHARM EL SHEIKH - EGYPT

SHARM DREAMS RESORT

SHARM EL SHEIKH - EGYPT

MASTERPLAN

© 1997



HAND SKETCHES SHARM DREAMS RESORT



IMPRESSION OF CREEK AND NET



IMPRESSION OF POOLSIDE
SHADE CANOPIES

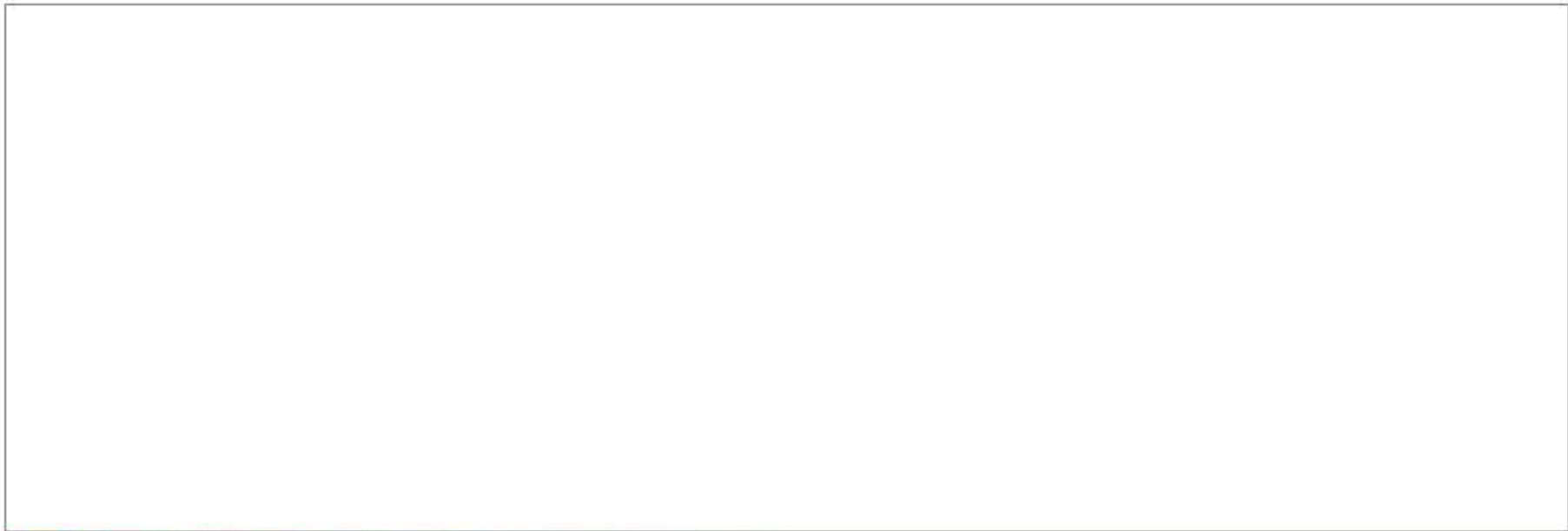


IMPRESSION OF FOUNTAIN AND
WATER SOURCE



SHARM DREAMS RESORT





BAD TATZMANNSDORF

HOTEL & SPA DEVELOPMENT

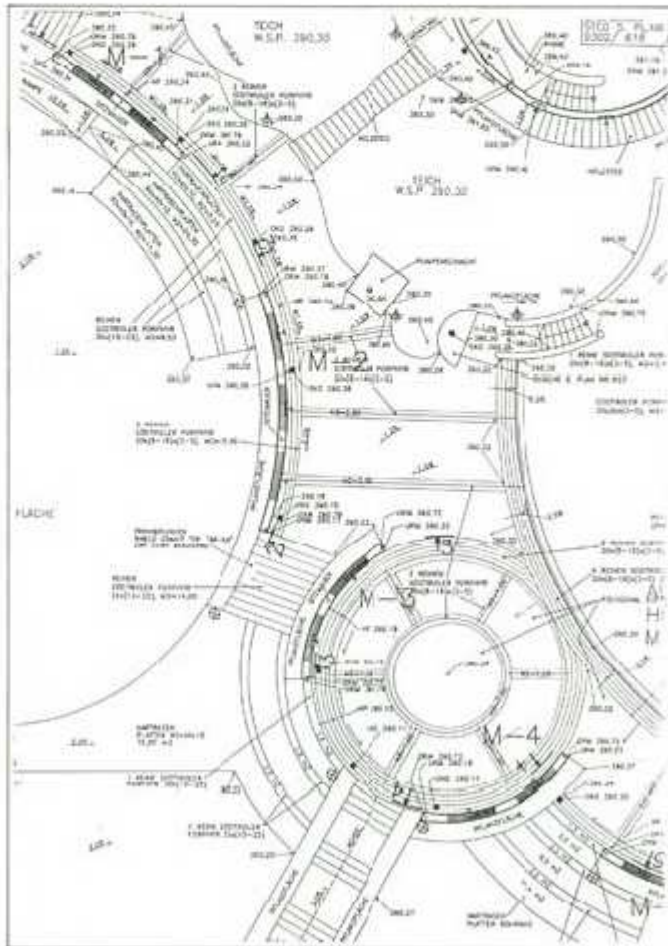


BAD TATZMANNSDORF

HOTEL & SPA DEVELOPMENT



BAD TATZMANNSDORF



**BADELANDSCHAFT
POOL AREA**



DETAIL PLAN

BAD TATZMANNSDORF



KLÄRTEICHE
RETENTION PONDS

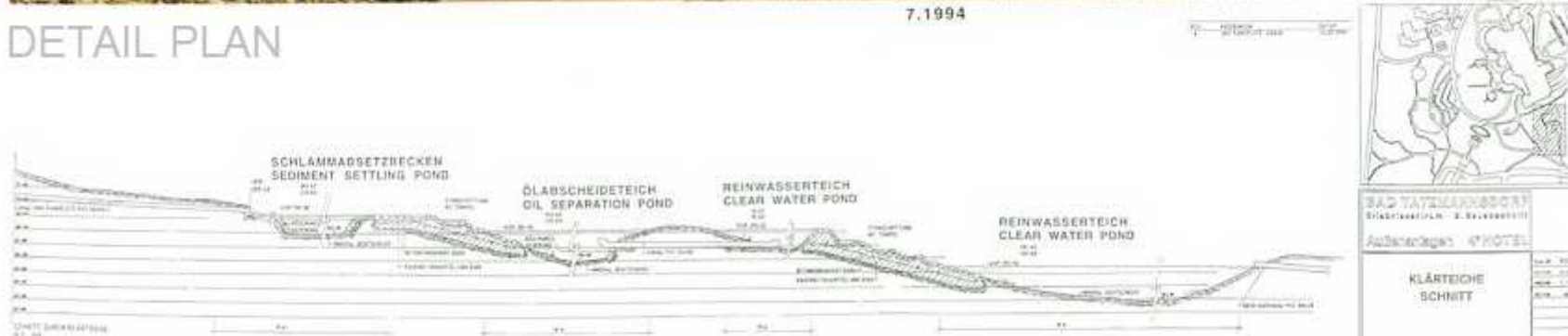


KLÄRTEICHE
RETENTION PONDS FOR FILTERING STORMWATER 5.1995



7.1994

DETAIL PLAN



DETAIL PLAN

[illegible][illegible]

LANZEN
Kirchen
GOLF & LIVING





Masterplan of the housing, the 18 Hole golf course with the club house and some sport facilities. On the opposite side of the street the asia spa and the activity park are located.

[click on the picture to enlarge](#)

Overview housing and golf



Apartments



[click on the picture to enlarge](#)

Visualisation of Club House area and Hole 9



Apartments



Impressions



[click on the picture to enlarge](#)



Impressions

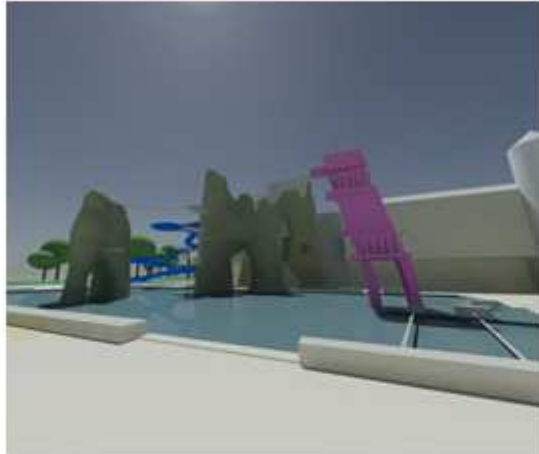








Visualisation





Attractions & Entertainment

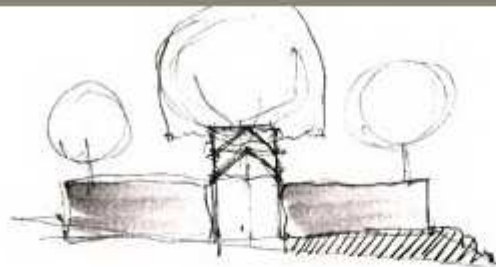


Schmiding

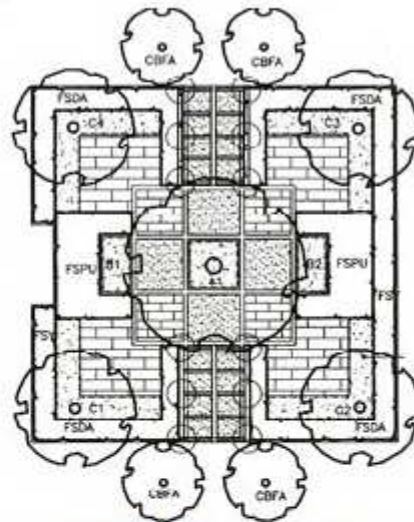
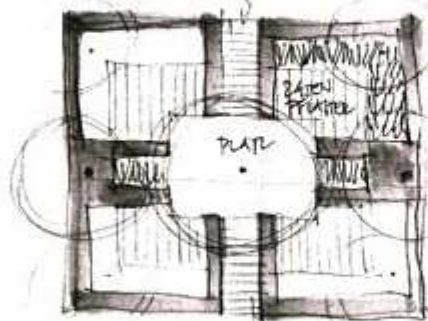
Austrian Garden Show

Schmiding Austrian Garden Show

hedges garden

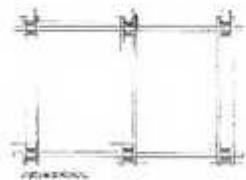


PAKKEGARTEN

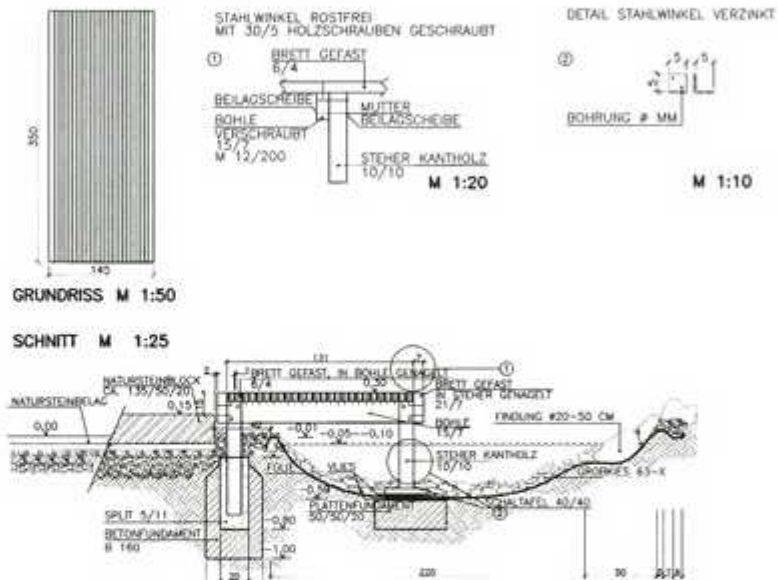


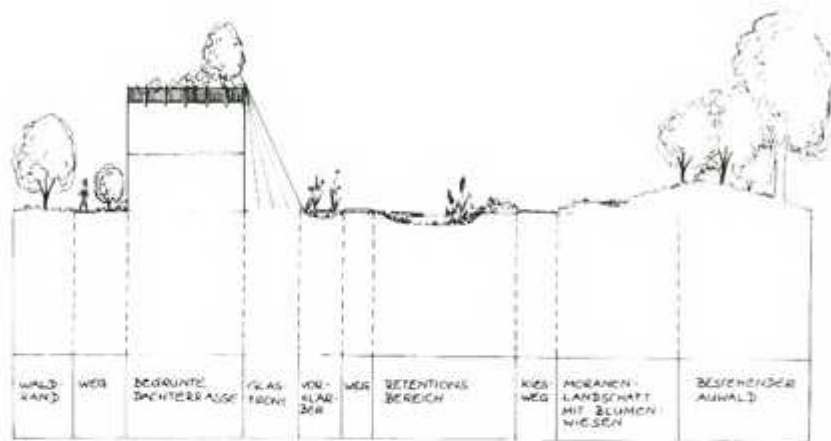
LEGENDE

- CBFA LAMINUS BETULUS FASTIGIATA
- FSY FAGUS SYLVATICA 175/200 m. B.
- FSAT FAGUS SYLVATICA "ATROPUNICA" H. 30/35 m. B.
- FSDA FAGUS SYLVATICA "DARFICK" 350/400 m. B.
- FSPU FAGUS SYLVATICA "PURPUREA" 150/175 m. B.



LANDESGARTENSCHAU SCHMIDING
HECKENGARTEN





SCHWIMMTEICH





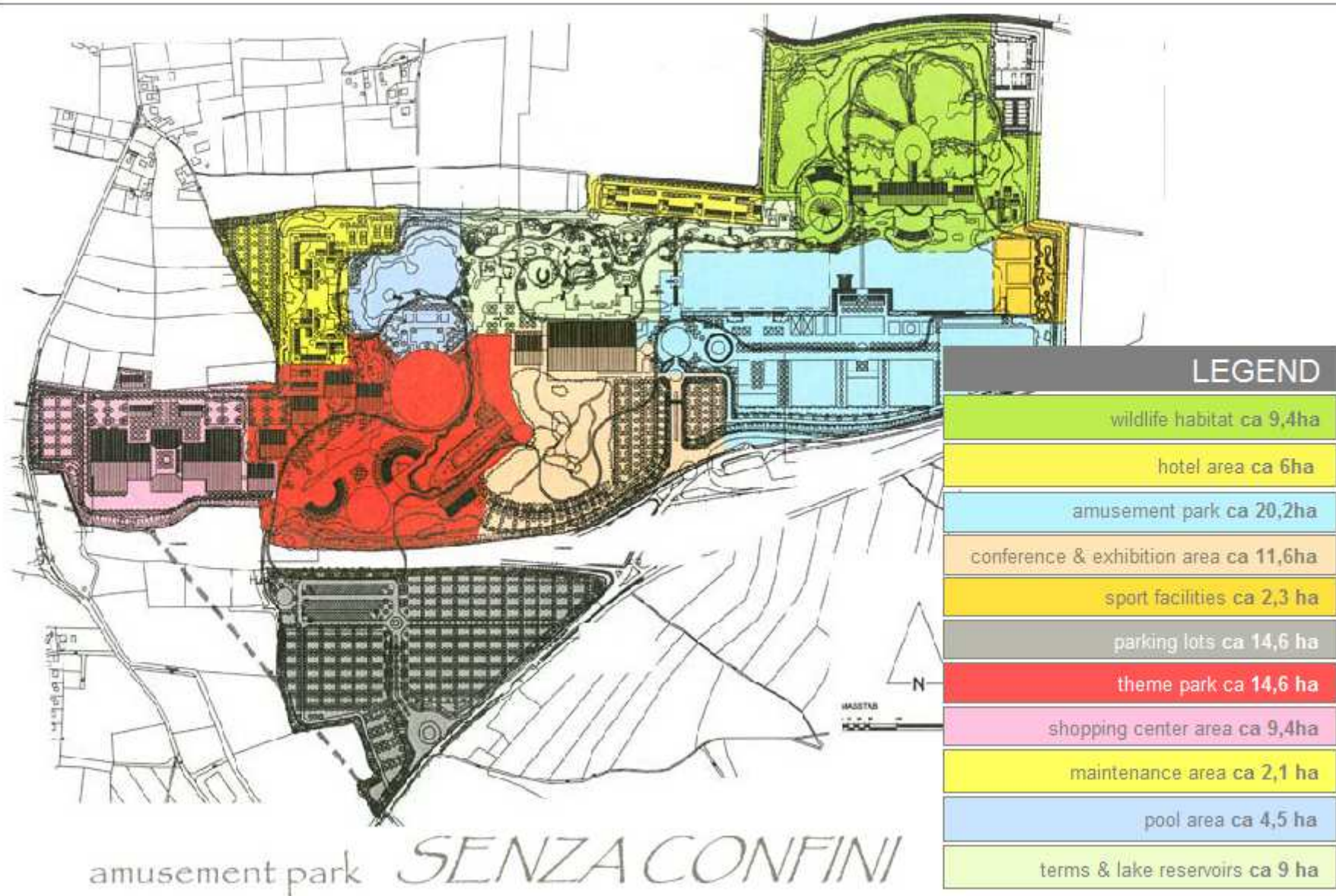
SENZA CONFINI

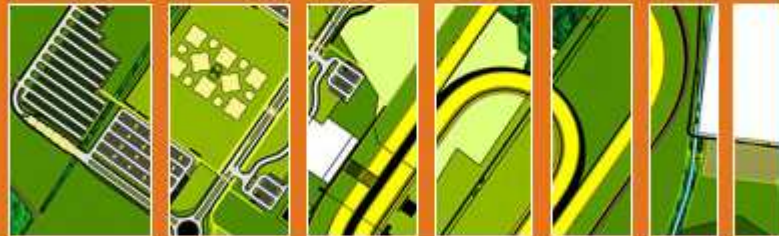
amusement park

SENZA CONFINI



SENZA CONFINI



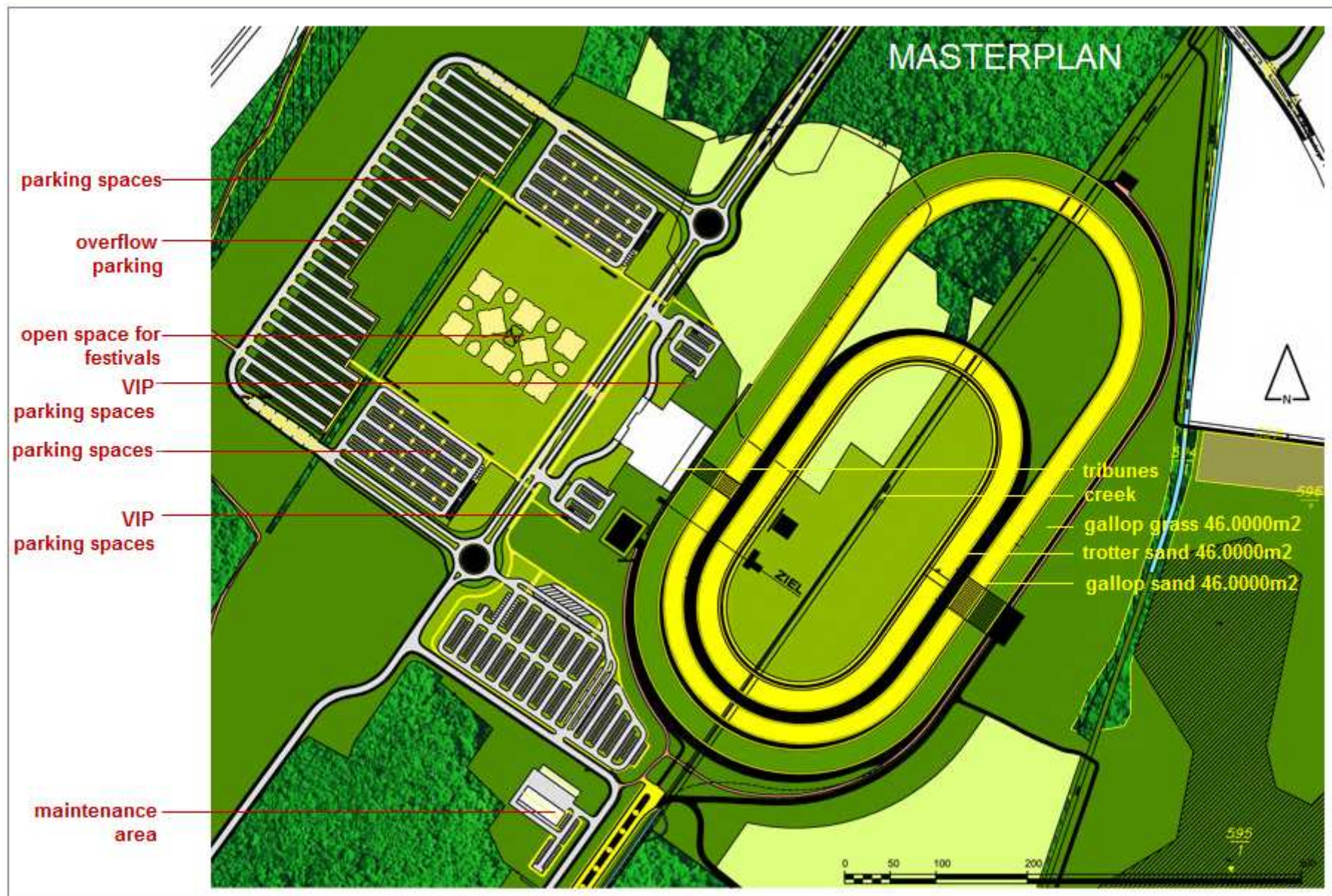


Sport facilities

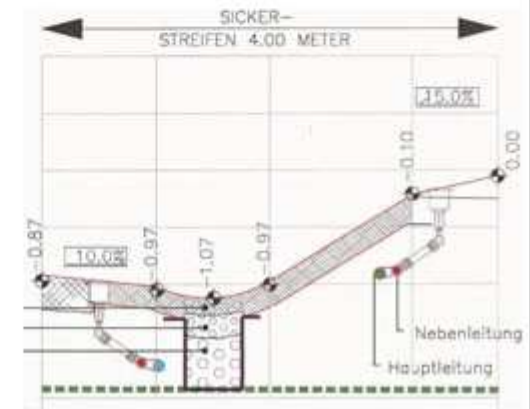
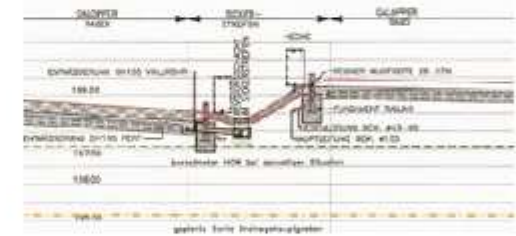
AUSTRIA

MAGNA RACINO





DETAILS



CONSTRUCTION PHASE





MAGNA CENTRAL OFFICE EUROPE

SPORT CENTER - OBERWALTERSDORF



SPORT FACILITIES

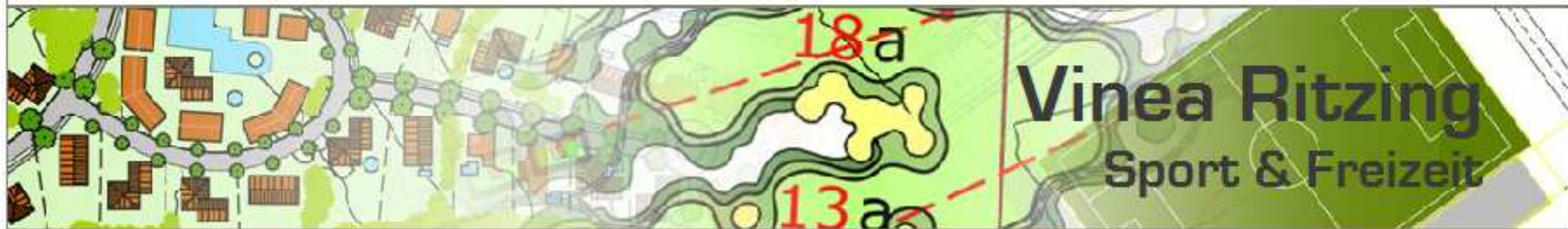




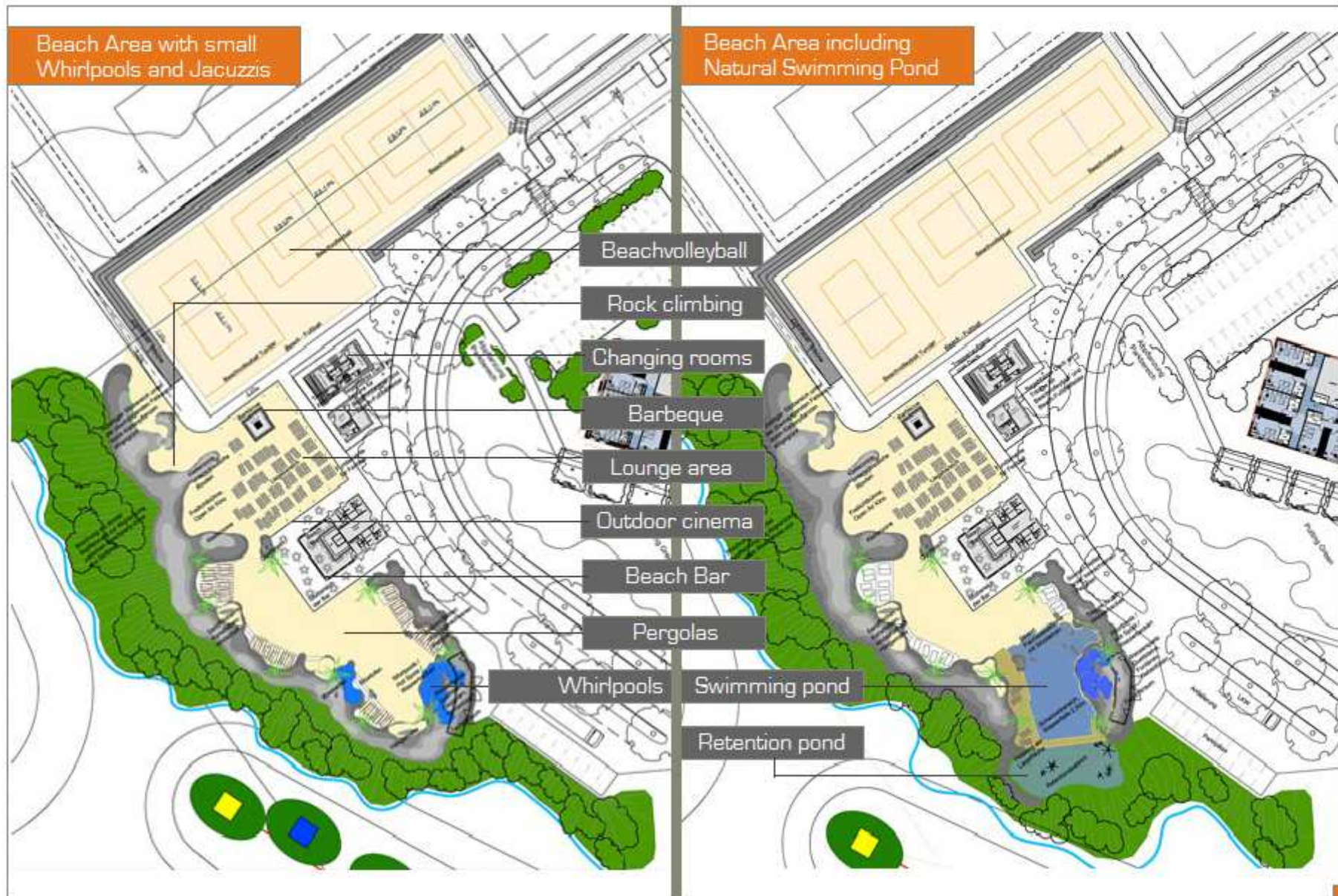
ROCK FEATURES
CONSTRUCTION PHASE







Beach area



Beach area



Beach Bar - Centre of beach area



Beach Lounge - Hot Pots - Waterfalls - Palms - Relaxing Area



Open Air Cinema & Stage between Beach Bar and Berbeque - Rockclimbing



Changing Rooms & First Aid Station Audience on the terrace



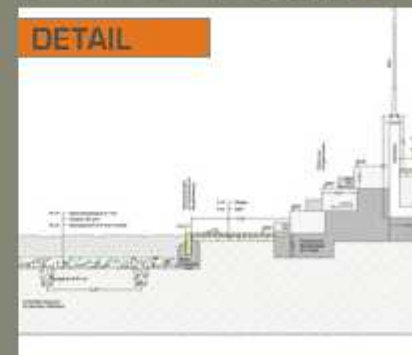
Delivery - Parking area



Beachvolleyball - Tribune



Sports fields



click on the picture to enlarge



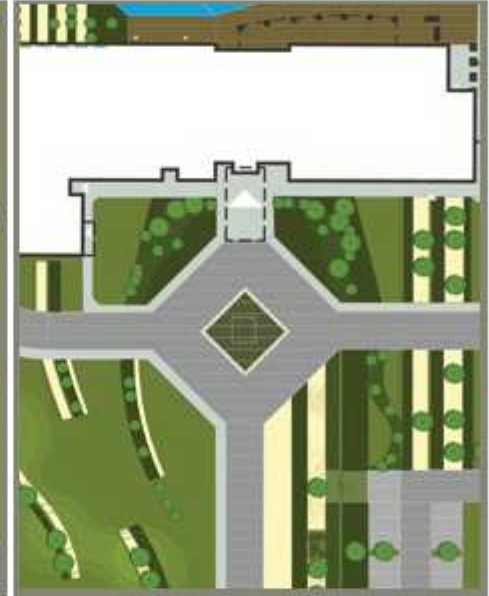
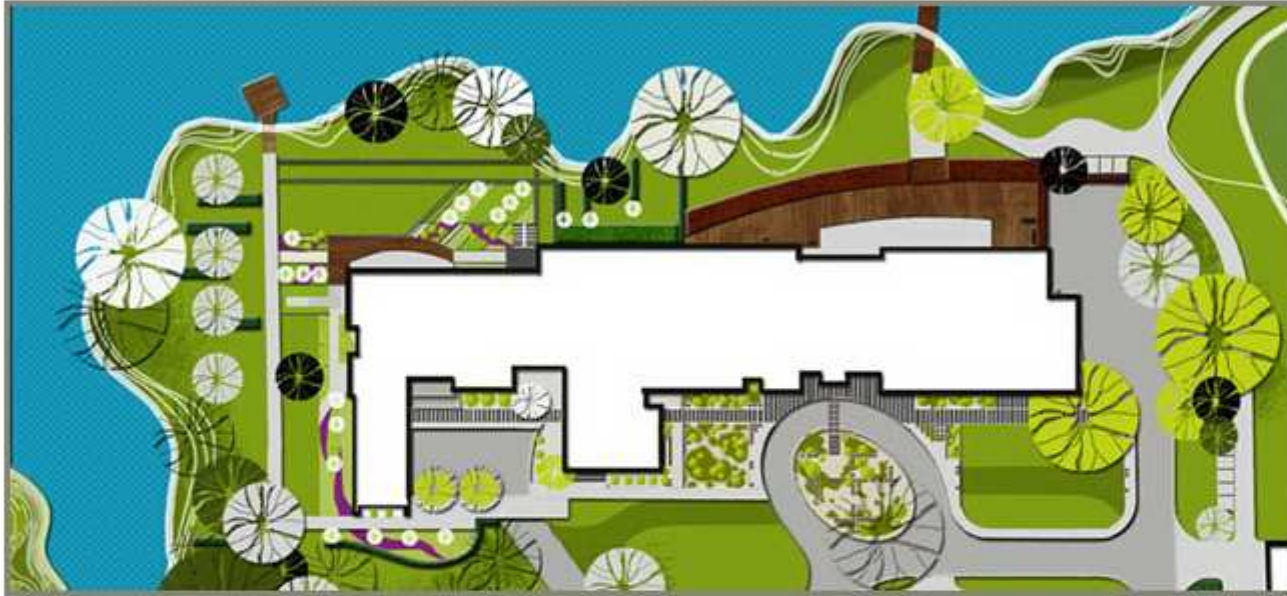
Community planning



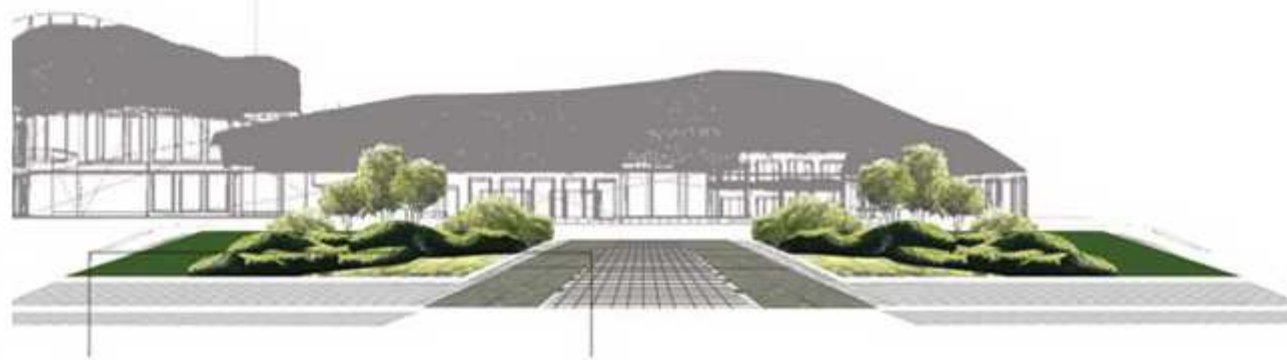
ROSA CLUBHOUSE

OUTSIDE FACILITIES

MASTERPLAN



VIEW OF BUILDING FRONT SIDE



LINEAR FORMS ALONG ENTRANCE ROAD

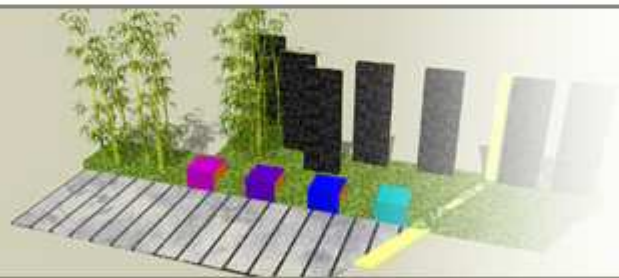
VISUALISATION



SUGGESTED PLANTINGS



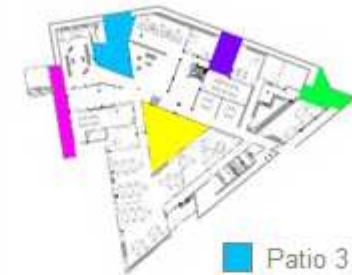
SECTION



Office Tower Cofresi

Lifestyle Resort

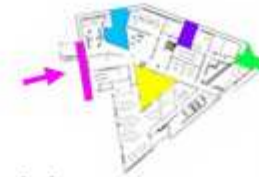
Overview of the Patios



- Patio 3
- Patio 1
- Patio 2
- Patio 4
- Patio 5

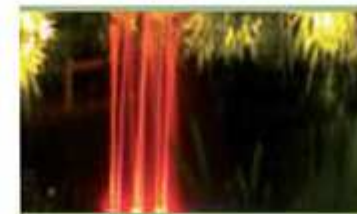


Jumping Waterjet

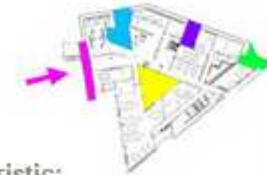


Characteristic:

- Natural stone plates
- Artificial rocks
- Jumping waterjets in color
- Ground cover
- Dwarfed plants



Cube Garden



Characteristic:

Square grid of paved stones
Illuminated glass cubes and stones
Light and grey gravel
Ground cover, palms, bamboo



Triangular Patio



Characteristic:

Lined pavement broken up with quader
Waterpillars
Floating elements
Skewed wall lighting
Projectors on walls



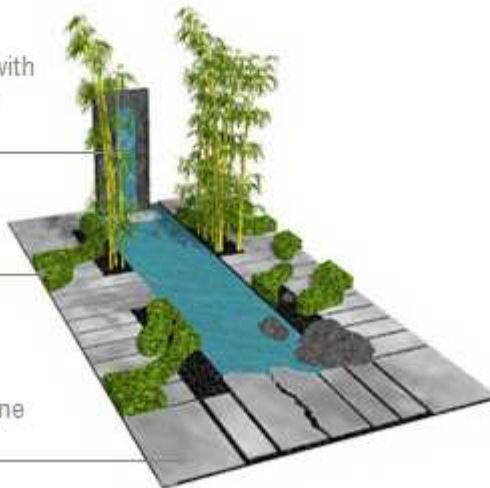
Waterwall Garden



rock face with
illuminated
waterfall

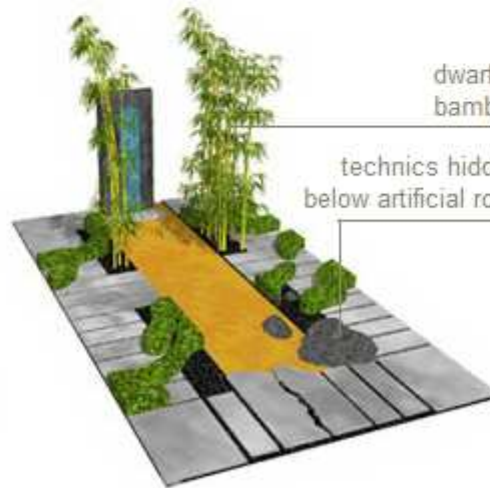
ground
cover

natural stone
paving



dwarfed
bamboo

technics hidden
below artificial rock

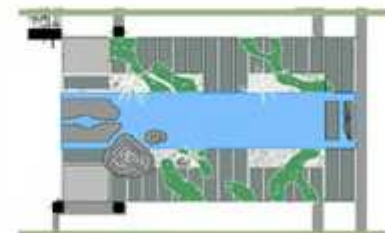


Characteristic:

Rock face with illuminated
waterfall

Natural stone paving

Ground cover, dwarfed bamboo



Contact Us

DI Hans-Georg Erhardt

Member of the European Institute
of Golf Course Architects



Member of the Austrian
Landscape Architects ÖGLA



GOLF&LAND
DESIGN

GOLF&LAND
DESIGN

Porschestrasse 7
A-4400 Steyr, Austria

Tel.: +43-7252-46022
Fax.: +43-7252-46022-22

office@golf-land-design.com
www.golf-land-design.com
